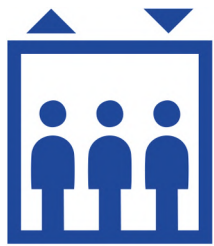
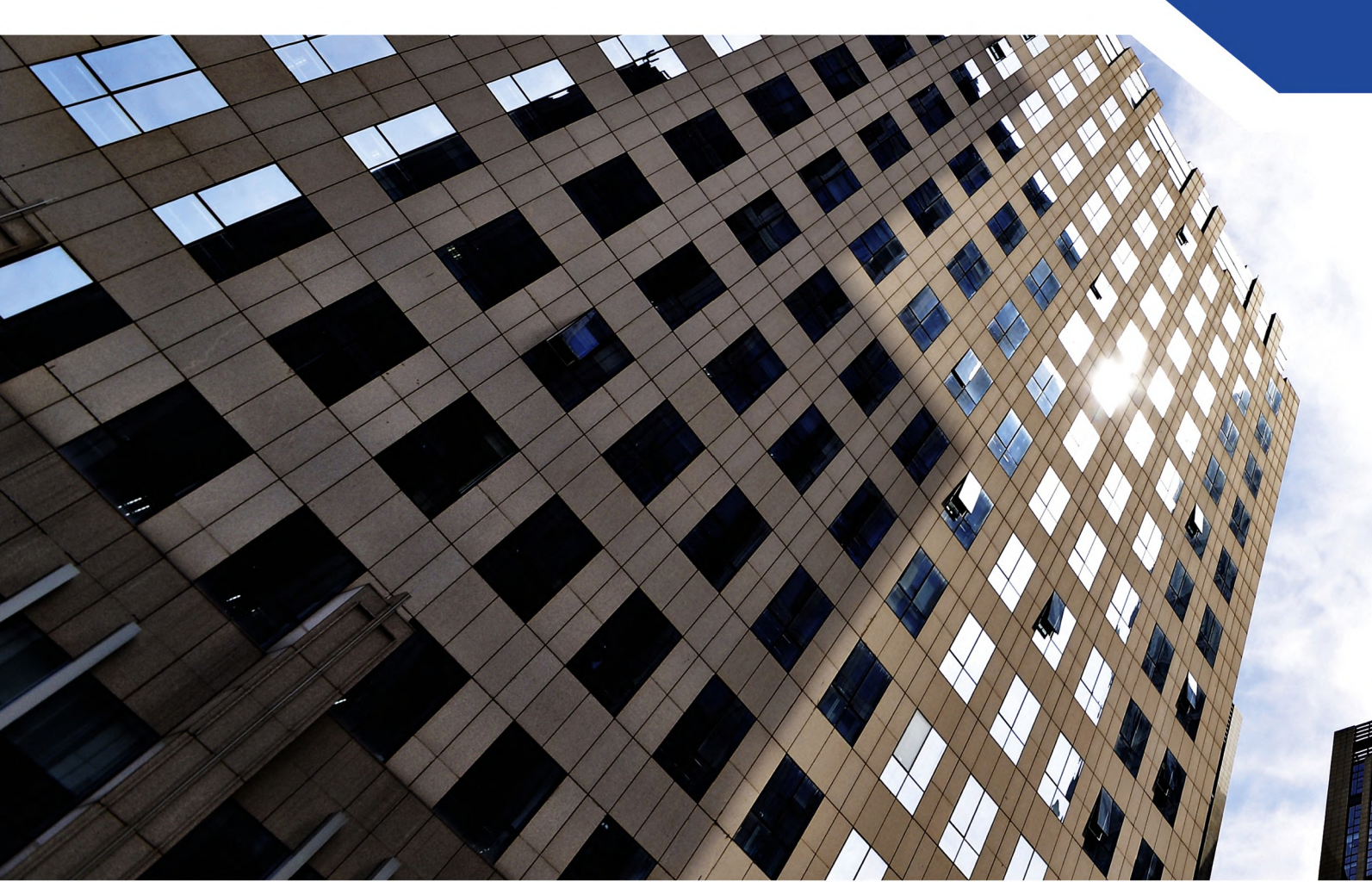




ELEVATOR HUB



Application Area



Residential



Office



Hotel



Shopping Mall



Locations & Event



Airport



High Rise



Express Elevator



Hospital



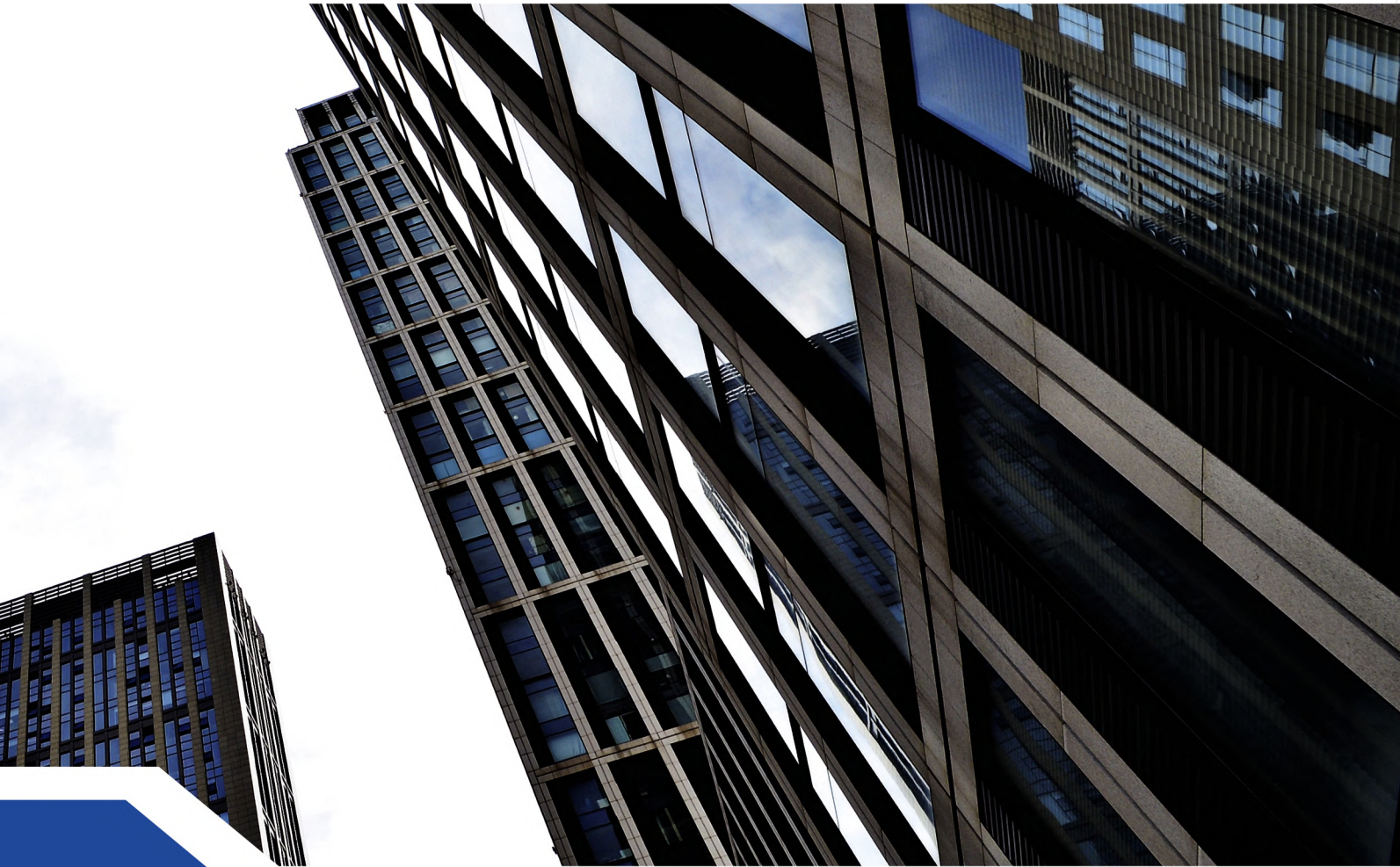
Production



Public building



Public transport



Elevate your thinking with ELEVATORHUB

ELEVATORHUB is an ISO Certified Company:

In India, one of the world's fastest growing construction markets, ELEVATORHUB specializes in providing advanced solutions for moving from one place to the next; vertically, horizontally and diagonally.

Our expertise in large infrastructure and demanding high-rise projects makes us a perfect match for the key growth sectors in the Indian construction industry.

Our portfolio includes widest range of passenger & freight elevators, escalators and moving walks, installed, serviced and modernized by us.

We believe in constantly innovating and driving efficiency to provide value and delivering the right solutions for our customers.

Our goal with each and every customer is to instill a deep sense of trust that we are with them whenever and wherever they need us by providing our best attention and services 24 hours a day, 365 days a year.

In addition, our continued investment in expanding our operations, commitment to high quality standards and a collaborative approach to working with our customers and partners show that we are committed to supporting our future growth and prosperity in the long term.

So all in all, we can assure you of our expertise in keeping people moving from A to B smoothly, stylishly and safety.

With you all the way

Providing you with end solutions - from the first enquiry to the end of a building's life

From Excellence to Perfection



Planning + Design



New Construction



Service



Maintenance & Review



Sales engineers

At your service from the moment you call, they will work to understand your need, then recommend the best solution for you down to the last technical detail.



Project managers

Your dedicated project manager will be your day to day point of contact responsible for making sure everything is done on time, to budget to keep you happy.



Installation technicians

Punctual and thorough in their approach, our installation technicians get the job done quickly, without cutting any corners.



Customer care center

Whether you need to tell us that somebody is stuck in the elevator or have a question about reducing power consumption, help is just a call away.



Maintenance engineers

Most helpful service experts are always on hand to keep your portfolio of equipment moving. Our young and dynamic service technicians are in tune with new technologies and are aware of the latest trends in elevator's technology

Meeting the needs of all our customers

Whatever area of the property business you're in, you can rest assured that needs are our top priority



Developers

Precise project management
Reliable and rigorous, we leave nothing to chance when getting things done.

Transparent and efficient use of budget
We'll keep you informed about costs every step of the way

Quality products mean happier tenants
Not compromising on quality today means fewer complaints from building occupants tomorrow.

No nasty surprises
Should any deviations from the agreed plan occur, we'll inform you immediately.



Architects

Plan with confidence
Helpful online tools help you move from concept to working drawings swiftly and accurately.

Support when you need it
If you have any questions about what's possible, our product expert are on hand to help.

Make it your own
All our products come with a wide range of options for customizing their functionality and appearance to suit your vision.

One stop solution
Widest range of products and services, coupled with unparalleled design flexibility make us the only provider you'll ever need.



Building Contractors

Completed Without delay
We go the extra mile to ensure that as far as possible, everything gets done on time, within the budget.

Extra support, always on hand
If extra resource is needed to come up with an urgent solution, our global scale means we have plenty in reserve.

No nasty surprises
Should any deviations from the agreed plan occur, we'll inform you immediately.

Getting it done
All our people are hired for their 'can do' attitude and are empowered to do whatever it takes to get the job finished.



Consultants

Capabilities you can count on
Our wide range of solutions mean that no job is too big for us, German quality standards mean that great execution is our top priority.

Here to back you up
Your contact partner will be a highly trained sales engineer, ensuring simple information flow and shorter response times.

Treating your reputation as our own
We know your customers value reliability and professionalism - so do we.

Systematic project management
We minimise construction, planning and implement cost, complete projects faster and guarantee cost and budget confidence in planning and assembly.



Building Owners

Minimise operating costs
Our third party service offer helps you consolidate your maintenance costs across your portfolio of properties by using just one provider - us.

Peace of mind we'll keep things moving
Our extensive network of India's most helpful service engineers are just a call away, 24 hours a day, 365 days a year.

Reliable and responsive support
If and when things do go wrong, our helpful technicians will be on site as soon as possible.

Unique designs equal happier tenants
A wide range of functional and cosmetic enhancements are available with all our products to make the experience of using them more convenient, pleasant, rapid and more.



Building Managers

Reliable maintenance engineers
Because nothing's more infuriating than someone who turns up late then fails to get the job done.

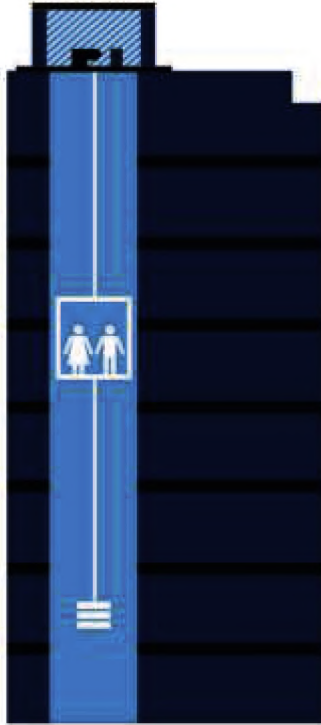
Rigorous attention to detail
Our engineers are all trained to be professional and do a thorough job.

No bolt left behind
We'll clean up after ourselves and leave no trace that we were ever there.

Adapt to your environment
Our service engineers are trained to be sensitive to the needs of your building environment and to cause minimal disruption to the tenants.

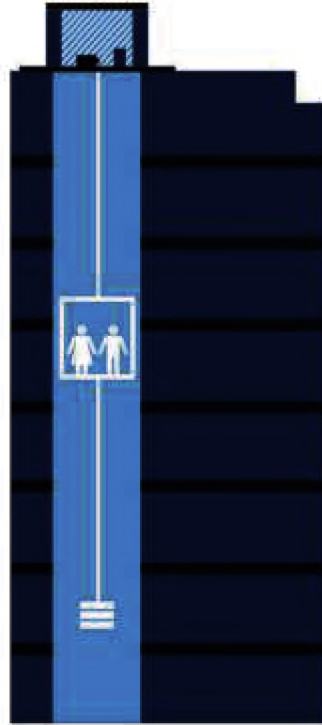


Elevator



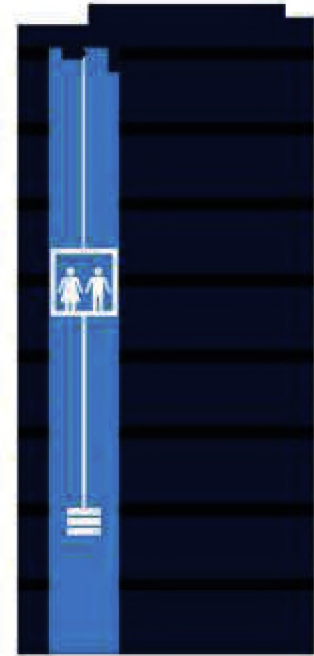
MR - G

Machine Room Geared



MR - GL

Machine Room Gearless



MRL

Machine Room Less



MR - G



MRL / MR - GL

Machinerroom geared (MR-G)

Our MR-G system provides the customised solution for a wide range of low and mid-rise buildings: Residential, Offices, Retail, Hotels, Hospitals and more.

Machinerroom gearless (MR-GL)

Our MR-GL configuration enables you to deliver higher acceleration and deceleration rates, giving passengers shorter waiting and travel times and an excellent ride comfort leading to greater passenger satisfaction.

Space saving and Machinerroom - less (MRL)

Our MRL solutions live up to increasing demands on efficiency, flexibility and safety. The compact PMS gearless drive allows more flexible and adaptable architectural designs. In addition, it also offers larger capacity, higher speed and more flexibility car sizes and decorations.

Panorama

For building with a view, our transparent glass elevators provide an open alternative to the elevator shaft, giving passengers panoramic views of internal atriums or the surrounding area.

From Conception to Perfection

Here we are helping you all the way with customized one-stop solution even by providing the in details you might miss.



Rated Speed (m/sec)	0.63	1							
Load (kg)	272	340	408	544	680	884	1088	1360	1763

MR Geared



Rated Speed (m/sec)	1	2	3	4	5	6	7	8	9	10
Load (kg)	272	340	408	544	680	884	1088	1360	1763	

MR Gearless



Rated Speed (m/sec)	1	2	3	4	5	6	7	8	9	10
Load (kg)	272	340	408	544	680	884	1088	1360	1763	

MRL

ELEVATORHUB Speed Recommendation

Upto 15	Stops 0.6 to 1.5 m/s
16-20 Stops	1.5 to 1.75 m/s
21-30 Stops	1.75 to 2.5 m/s
31-45 Stops	3.0 to 4.0 m/s
46-60 Stops	4.0 to 6.0 m/s
Above 60 Stops	6.0 m/s & above

DESTINATION CONTROL SYSTEM - DCS (OPTIONAL)

All it takes is three simple steps



1 SELECT

your destination floor

at the Destination Operating Panel (DOP). The display will tell you which elevator has been assigned to you and where it is located.



2 MOVE

to your elevator.

All elevators are clearly marked with identifiers above their doors.



3 ENJOY

the journey.

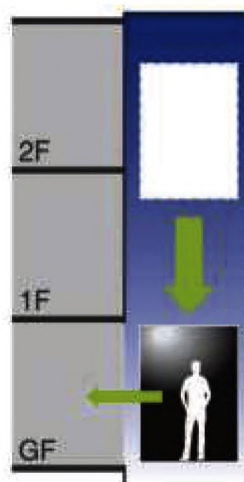
Once in the car, the next-stops indicator displays the destination stops the car will make. The position indicator informs you when you have arrived at your destination floor.

Efficiency, comfort and security

- Increased efficiency for building owners
- Increased comfort and reduced journey times for passengers
- Increased security and peace of mind for residents



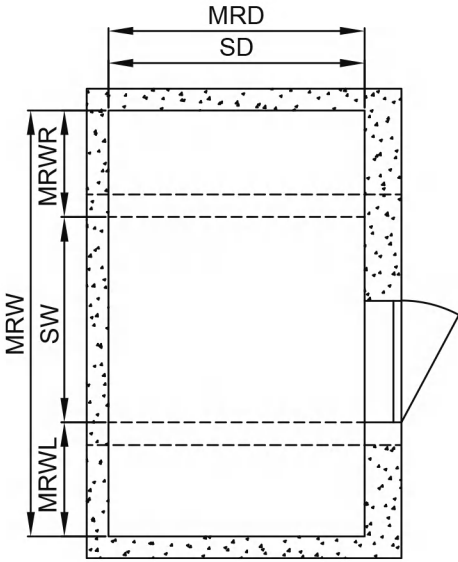
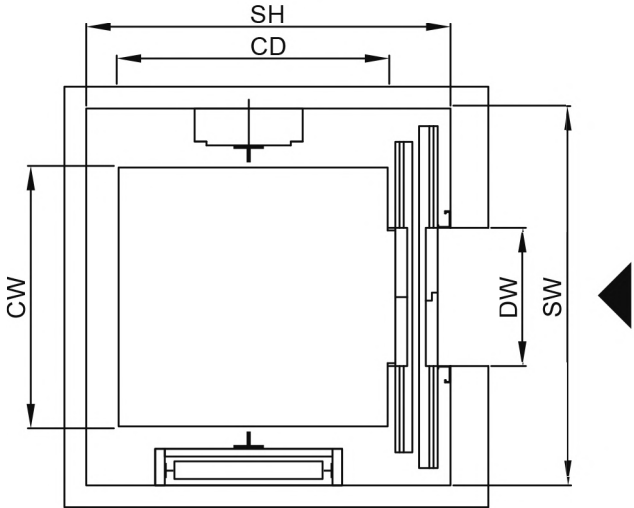
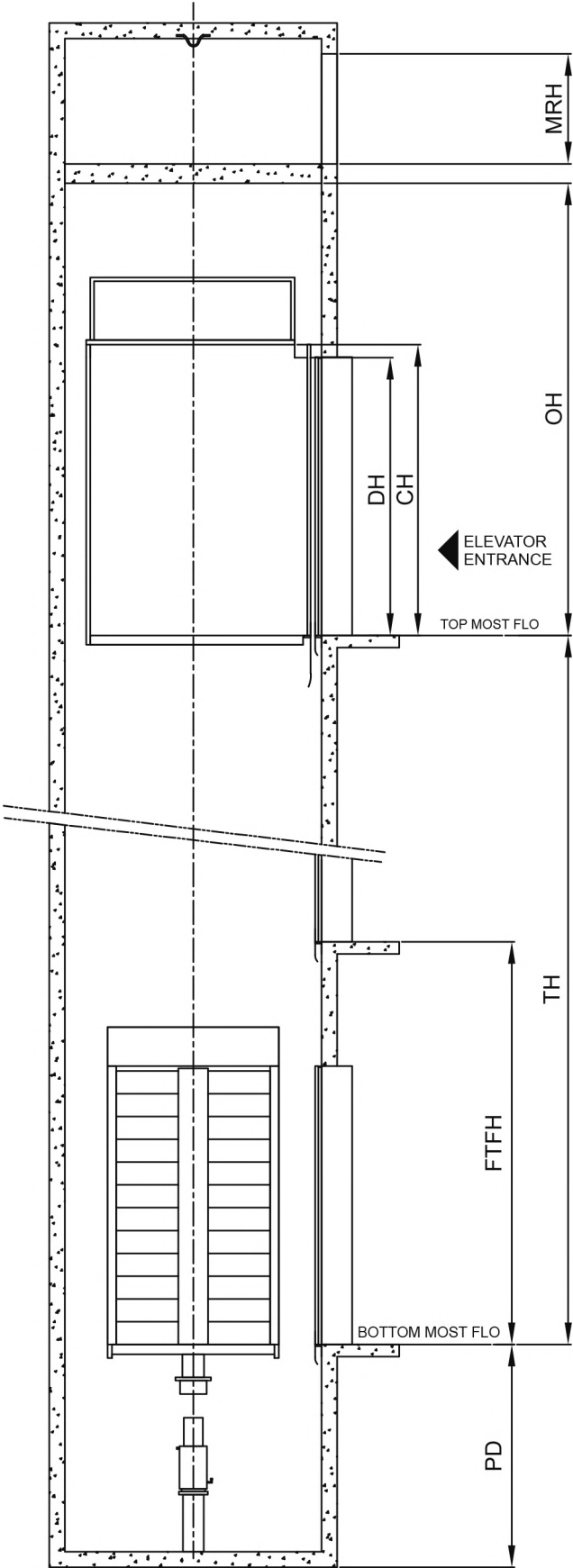
AUTOMATIC RESCUE DEVICE-ARD (OPTIONAL)



Automatic Rescue Device for Power Failure

Upon electric power supply failure, a car automatically moves to the bottom floor and doors open by using a rechargeable battery to facilitate the safe evacuation of passenger. And upon electric power supply failure, an emergency car light automatically turns on immediately and provides minimum level of lighting within a car by the rechargeable battery.

Machine Room configuration (MR)



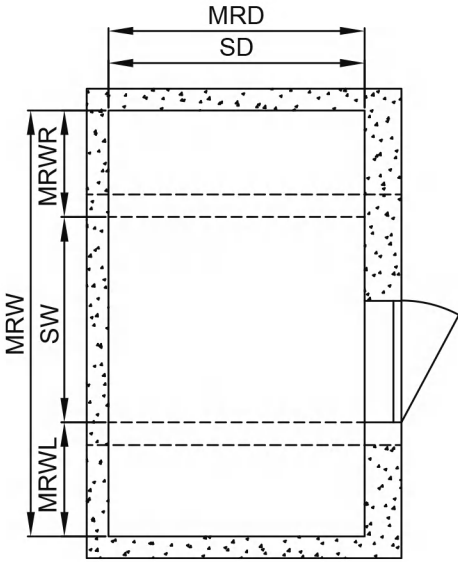
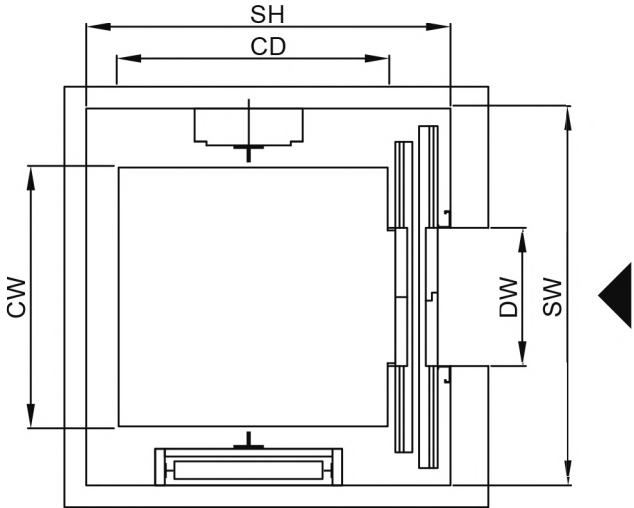
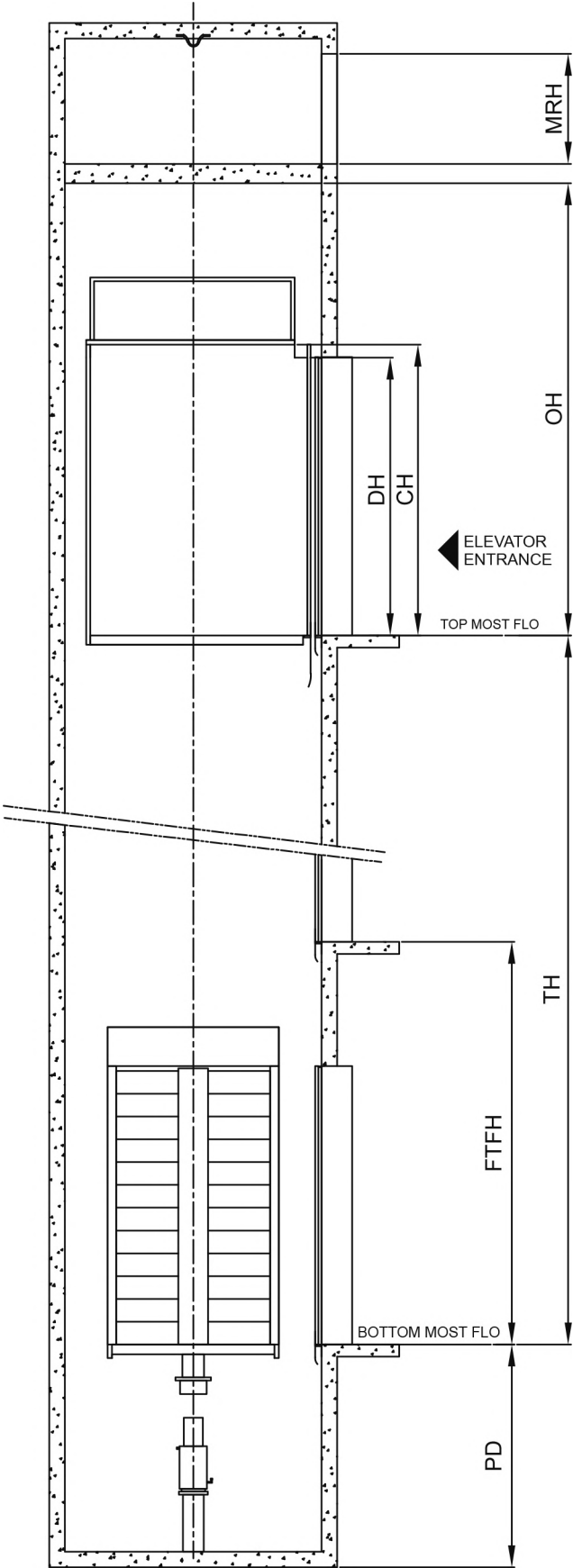
Above illustration is of Automatic Center Opening

Planning Specifications (MR)

	Rated Load [kg]	Pax.	Car Size [CWxCD] [mm]	Door Width (DW) (mm)	Door type	Speed 0.6 m/s Minimum (SW×SD) (mm)	Speed 1.0~2.5(m/s) Minimum (SW×SD) (mm)	Speed 3.0~3.5(m/s) Minimum (SW×SD) (mm)
Passenger	272	4	1100x700	800	ACO	1900x1300	1900x1300	-
	408	6	1100x1000	800	ACO	1900x1700	1900x1700	-
	544	8	1300x1100	800	ACO	1900x1900	1900x1900	-
	680	10	1300x1350	800	ACO	1900x2150	1900x2150	-
	884	13	2000x1100	900	ACO	2600x1900	2600x1900	-
	952	14	1600x1400	900	ACO	2200x2100	2200x2100	2200x2150
	1088	16	1600x1600	1000	ACO	2200x2300	2200x2300	2200x2350
	1224	18	2000x1400	1100	ACO	-	2600x2100	2600x2150
	1360	20	2000x1500	1100	ACO	-	2600x2100	2600x2250
	1496	22	2100x1600	1100	ACO	-	2700x2300	2700x2350
1768	26	2350x1600	1200	ACO	-	3000x2300	3000x2350	
Hospital	1020	15	1000x2400	800	ATO	1800x300	1800x3000	-
	1360	20	1300x2400	1200	ATO	-	2300x3000	2350x3000
	1768	26	1400x2550	1200	ATO	-	2500x3150	2500x3050
	1972	29	1500x2700	1400	ATO	-	2650x3200	2600x3200
	2448	36	1800x2700	1400	ATO	-	2800x3150	2900x3200
Goods	1000	-	1400x1800	1200	ACO	-	2300x2350	-
	1500	-	1700x2500	1500	ACO	-	2700x2550	-
	2000	-	1700x2500	1500	ACO	-	2800x3050	2800x3050
	2500	-	2000x2500	1700	ACO	-	3000x3050	3000x3050
	3000	-	2000x3000	1700	ACO	-	3000x3050	3000x3550
	4000	-	2500x3000	2100	ACO	-	3700x3650	3700x3650
	5000	-	2500x3600	2100	ACO	-	3850x4250	3850x4250
Automobile	2500	-	2500x5300	2400	ACO	4000x6100	-	-
	3000	-	2700x5400	2400	ACO	4000x6200	-	-
	4000	-	3000x5800	3000	ACO	4300x6700	-	-
	5000	-	3000x6000	3000	ACO	4300x6900	-	-

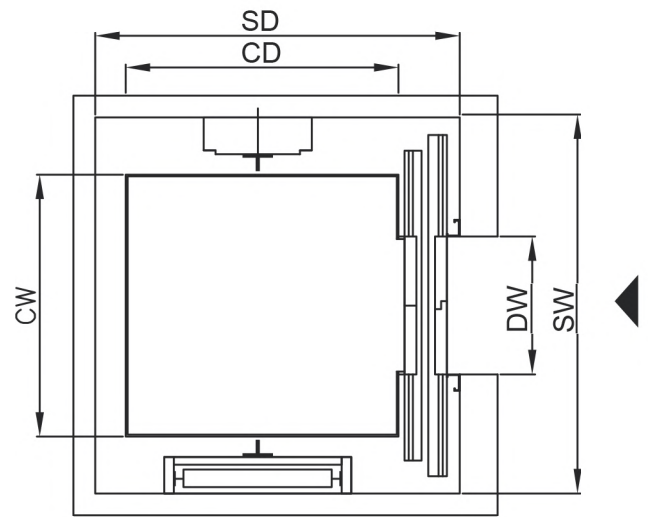
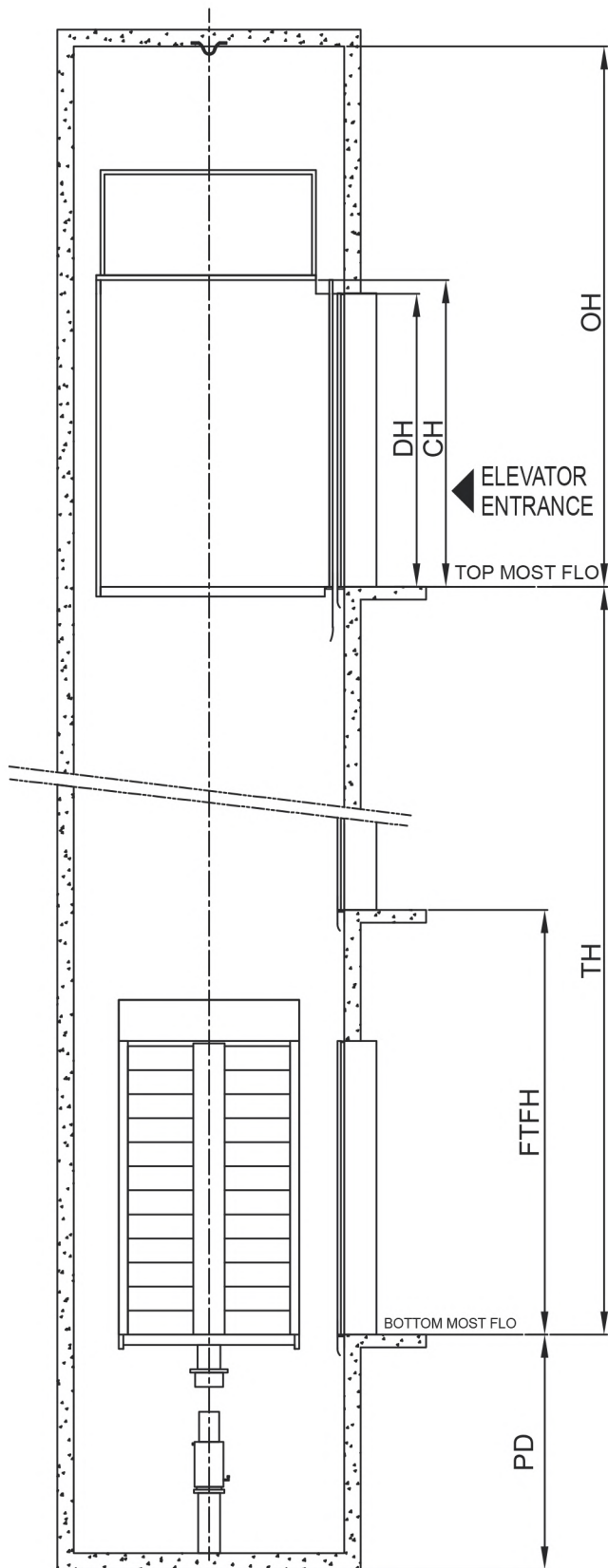
Abbreviations: CW: Car width, CH: Car height, CD: Car depth, DW: Door width, DH: Door height, SW: Shaft width, SD: Shaft depth, ACO: Automatic center opening, FTFH: Floor to floor height, TH: Travel height, OH: Overhead, PD: Pit depth MRH: Machine room height MRW: Machine room width, MRD: Machine room depth.

Machine Room configuration (MR)



Above illustration is of Automatic Center Opening

Machine Room Less Configuration (MRL)



Planning Specifications (MRL)

	Rated Load [kg]	Pax.	Car Size [CWxCD] [mm]	Door Width (DW) (mm)	Door type	Speed 1.0~2.0 m/s Minimum (SW×SD) (mm)	Speed 2.5(m/s) Minimum (SW×SD) (mm)	Speed 3.0(m/s) Minimum (SW×SD) (mm)
Passenger	272	4	900x850	700	ACO	1600x1550	-	-
	408	6	1000x1100	800	ACO	1800x1700	-	-
	544	∞	1300x1100	800	ACO	1950x1800	-	-
	680	10	1350x1300	800	ACO	2000x1900	-	-
	884	13	1600x1400	1000	ACO	2300x1950	2550x2050	2550x2250
	1020	15	1600x1550	1000	ACO	2300x2050	2500x2150	2550x2250
	1088	16	1600x1600	1000	ACO	2300x2100	2550x2200	2550x2300
	1360	20	1800x1700	1100	ACO	2700x2300	2700x2350	2700x2350
	1496	22	1800x1900	1100	ACO	2700x2400	2750x2450	2750x2450
	1768	26	1900x2000	1100	ACO	2800x2450	2850x2450	2850x2500
1972	29	2350x1700	1200	ACO	3100x2200	3100x2200	-	
Hospital	1020	15	1100x2400	900	ACO/ATO	2150x2950	-	-
	1360	20	1300x2400	1200	ACO/ATO	2350x2950	-	-
	1564	23	1400x2400	1300	ACO/ATO	2450x2950	-	-
	1972	29	1500x2700	1300	ACO/ATO	2450x3250	-	-
Goods	500	-	1300x1100	800	ACO	1950x1800	-	-
	1000	-	1600x1550	1000	ACO	2250x2050	-	-
	1600	-	1400x2400	1300	ATO	2500x3000	-	-
	2000	-	1500x2700	1300	ATO	2500x3300	-	-
	2500	-	1800x2650	1700	ACO	3150x3250	-	-
	3000	-	2000x2700	1800	ACO	3350x3300	-	-
	4000	-	2100x3400	1800	ACO	3400x4000	-	-
	5000	-	3500x2200	2200	ACO	3800x4100	-	-
Automobile	3000	-	2500x5500	2200	ACO	3800x6450	-	-
	4000	-	3000x6000	2700	ACO	4300x6950	-	-
	-	-	-	-	-	-	-	-
	-	-	-	-	-	-	-	-

Abbreviations: CW: Car width, CH: Car height, CD: Car depth, DW: Door width, DH: Door height, SW: Shaft width, SD: Shaft depth, ACO: Automatic center opening, FTFH: Floor to floor height, TH: Travel height, OH: Overhead, PD: Pit depth.

General Data

Features	272 kg	408 kg	544kg	680 kg	884 kg	952 kg	1088/1000 kg	1224 kg
Minimum Overhead (OH) (mm) for 0.6 m/s speed	CH + 1900							
Minimum Overhead (OH) (mm) for 1.0,1.6,2.0 m/s speed	CH + 1950, CH + 2200, CH + 2300, CH + 2700							
Minimum Overhead (OH) (mm) for 2.5,3,3.5,4,5,6,7,8,9,10 m/s speed						CH + 2800, CH + 3000, CH + 3450		
Minimum Pit depth (PD) (mm) for 0.6 m/s speed	1350							
Minimum Pit depth (PD) (mm) for 1.0,1.6,2.0 m/s speed	1500, 1600, 1800, 2200							
Minimum Pit depth (PD) (mm) for 2.5,3,3.5,4,5,6,7,8,9,10 m/s speed						2500, 3000, 3200, 4500, 4600		
Floor to floor height (mm) for 1.0, 1.50,1.75 m/s speed	Door height + 150							
Car height (mm)	2150							

Abbreviations : CH : Car height

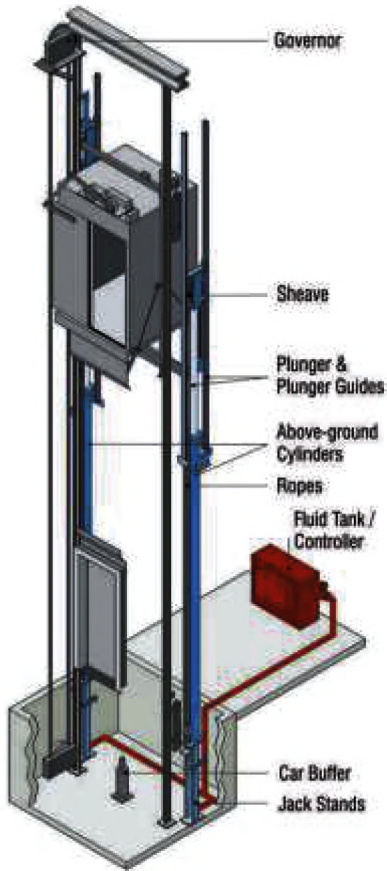
1360 kg	1496/1500 kg	1768 kg	1972/2000 kg	2500 kg	3000 kg	4000 kg	5000 kg
CH + 2800, CH + 3000, CH + 3450, CH + 3600, CH + 3800, CH + 4000, CH + 4300, CH + 5000,							
4700, 5500, 5900, 6500, 7100, 7500							

Hydraulic Elevator

Type of Suspension

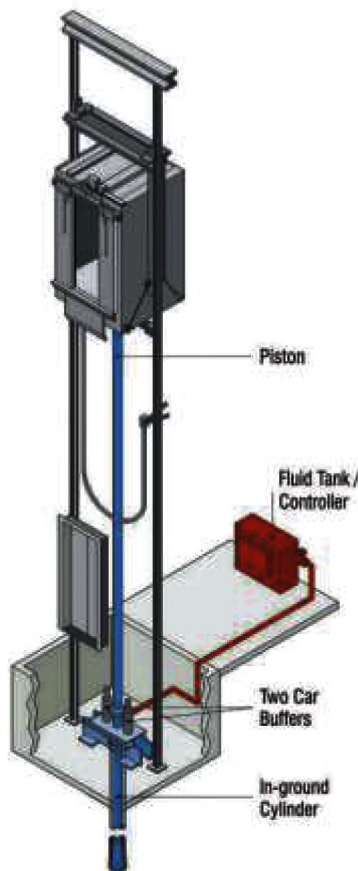
Rope Type

Side indirect acting suspension with wire ropes with one piston for regular loads and long travels.



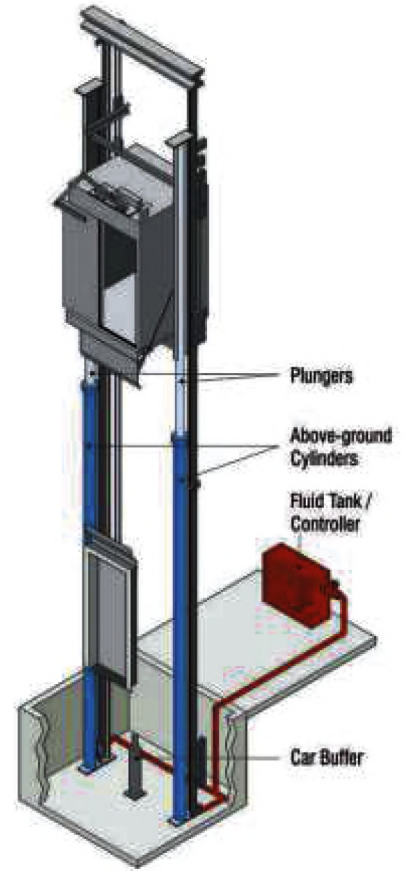
Hole Type

Direct suspension. The simplest solution for any load with a simple or split piston.



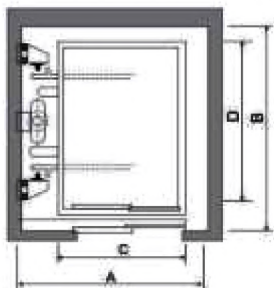
Hole Less Type

Side direct suspension with two simple piston for large loads and short travels. (Max. Travel 4 Mt.)



Rope Type 1

It is a single side indirectly acting suspension with wire ropes having one piston for regular loads travels of maximum 13 meters.

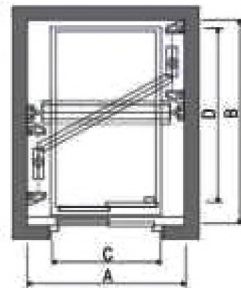


Pax.	Rated Load (kg)	Shaft-W (A)	Shaft-D (B)	Car-W (C)	Car-D (D)
3	225	1300	1300	800	900
4	300	1350	1450	850	1050
5	375	1500	1500	950	1100
6	450	1600	1550	1050	1150
8	600	1600	1800	1200	1300
10	750	1700	1950	1200	1550
12	900	1800	2050	1300	1650
15	1125	1800	2400	1350	2000
20	1600	1900	2800	1500	2400

PIT : 1200 mm, O.H. : 3660 mm

Rope Type 2

It is an Indirect suspension with wire ropes having dual pistons for heavy loads and long travels of maximum 12 meters.

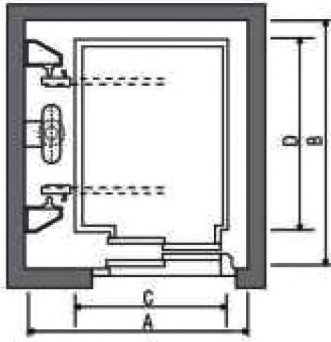


Pax.	Rated Load (kg)	Shaft-W (A)	Shaft-D (B)	Car-W (C)	Car-D (D)
10	750	1900	1950	1200	1550
12	900	2000	2050	1300	1650
15	1125	2000	2400	1300	2000
18	1350	2050	2650	1350	2250
20	1500	2100	2800	1400	2400
26	2000	2300	3000	1600	2600
30	2300	2400	3100	1700	2700
33	2500	2500	3200	1700	2800

PIT : 1200 mm, O.H. : 3660 mm

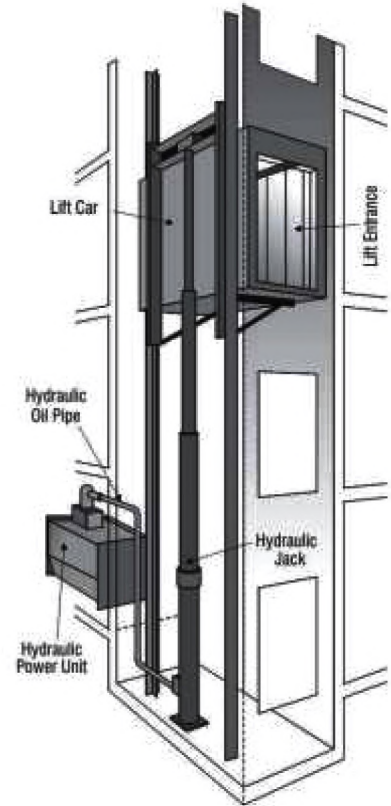
Holeless Type 1

It is a single side direct suspension with a simple piston for regular loads and short travels of maximum 4 meters.



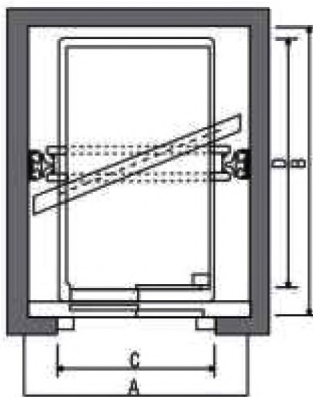
Pax.	Rated Load (kg)	Shaft-W (A)	Shaft-D (B)	Car-W (C)	Car-D (D)
10	750	1900	1950	1200	1550
12	900	2000	2050	1300	1650
15	1125	2000	2400	1300	2000
18	1350	2050	2650	1350	2250
20	1500	2100	2800	1400	2400
26	2000	2300	3000	1600	2600
30	2300	2400	3100	1700	2700
33	2500	2500	3200	1700	2800

PIT : 1200 mm, O.H. : 3660 mm



Holeless Type 2

It is a single side direct suspension with dual simple pistons for heavy loads and short travels of maximum 4 meters.

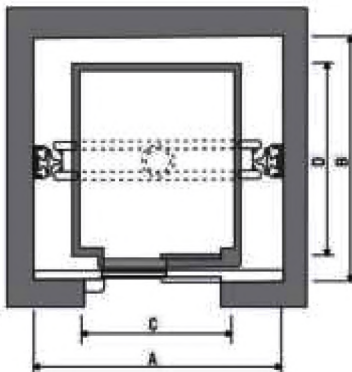


Pax.	Rated Load (kg)	Shaft-W (A)	Shaft-D (B)	Car-W (C)	Car-D (D)
10	750	1900	1950	1200	1550
12	900	2000	2050	1300	1650
15	1125	2000	2400	1300	2000
18	1350	2050	2650	1350	2250
20	1500	2100	2800	1400	2400
26	2000	2300	3000	1600	2600
33	1700	2500	3200	1700	2800
40	3000	2700	3400	1900	3000

PIT : 1500 mm, O.H. : 3900 mm

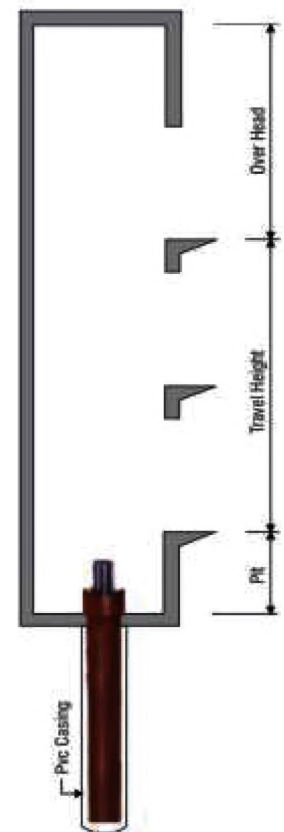
Holeless Type

It is a direct suspension with a simple or split piston. It is the simplest solution of suspension for any load.



Pax.	Rated Load (kg)	Shaft-W (A)	Shaft-D (B)	Car-W (C)	Car-D (D)
3	225	1200	1200	800	900
4	300	1250	1350	850	1050
5	375	1400	1400	1000	1100
6	450	1500	1500	1100	1150
00	600	1500	1700	1100	1400
10	750	1600	1850	1200	1550
12	900	1700	1950	1300	1650
15	1125	1700	2300	1300	2000
20	1500	1800	2700	1400	2400
24	1800	1900	2800	1500	2500

PIT : 1500 mm, O.H. : 3900 mm
(PIT & O.H. change the technical Specification)



Observation Elevator



Elevator Doors

Autodoor Center Opening



Two fold telescopic door



Imperforated door



Semi Automatic Swing Door

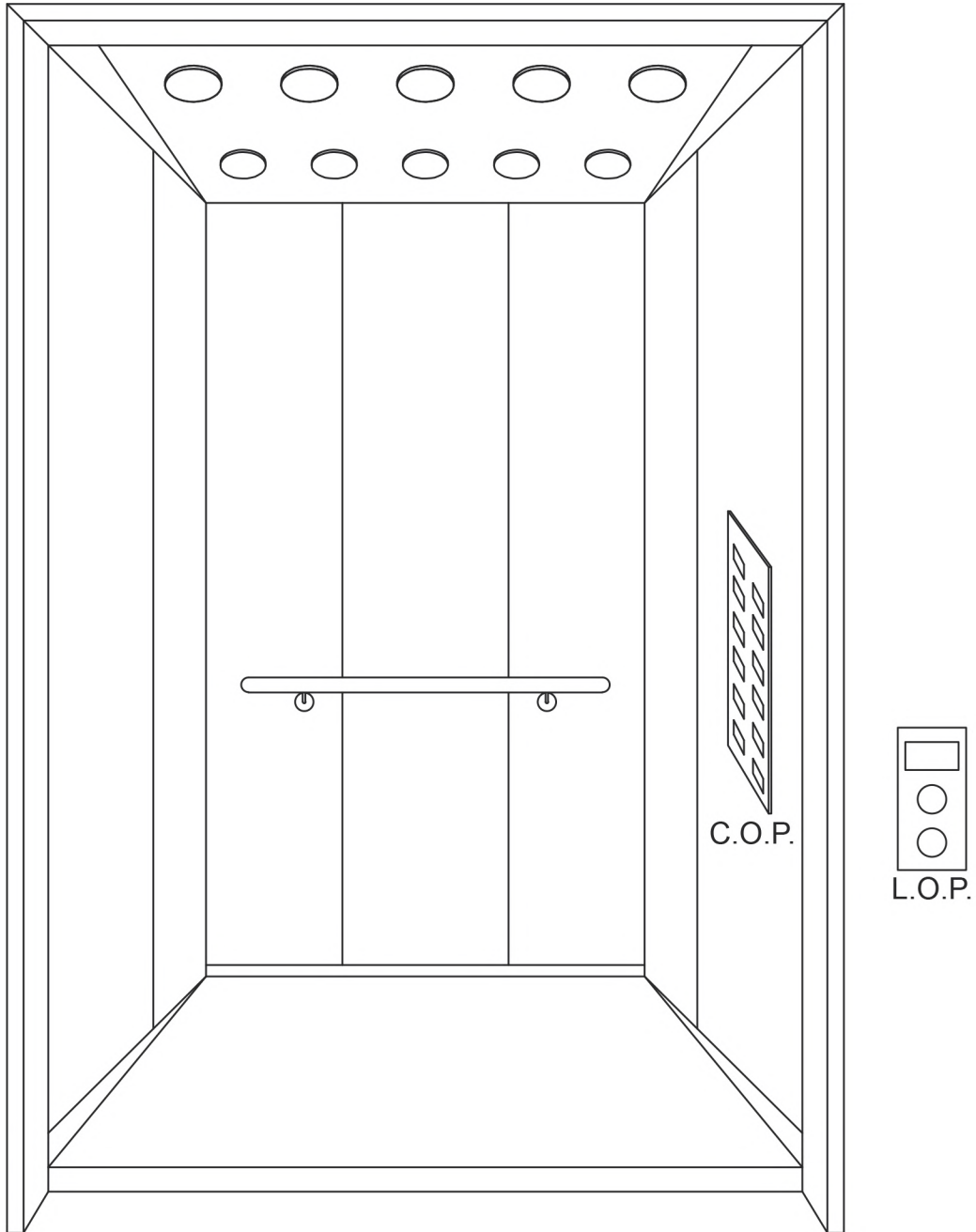


Collapsible door



Freedom of design

Create the look and feel you like. Combine colors, materials, lightings, mirrors, handrails and fixtures to achieve the ambiance that fits both your ideas and your building. Choose from one of our design, and create the whole car to your own taste.



Step 1

Combine colors and materials. Choose out design in powder coated and stainless steel finishes.



Step 2

Pick a floor and ceiling. Choose from stainless steel ceiling options with a matt or gold finish and matching floors.



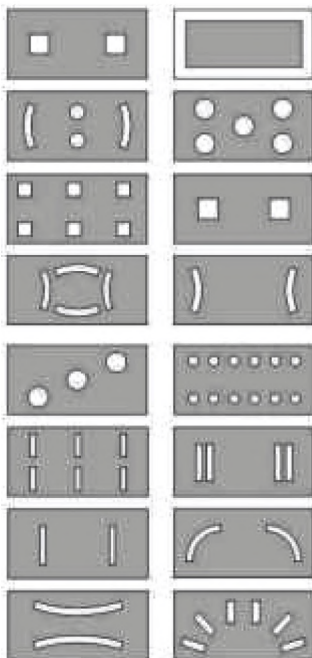
Step 3

Select your operating panels. Integrate stainless steel or glass panels in black or white.



Step 4

Choose the lighting. Create ambiance with direct or indirect lighting and different lighting designs like square, spot or curve.

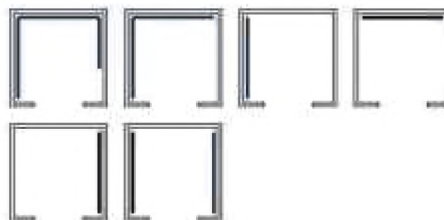


Step 5

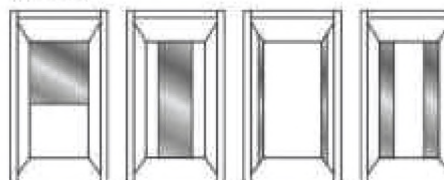
Add options. Handrails, Mirrors, Display Module, Hall lantern and complete the car. illuminated handrails and skirting are an additional highlight.



Handrails



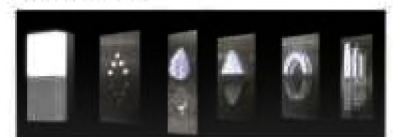
Mirrors



Display Module



Hall Lantern

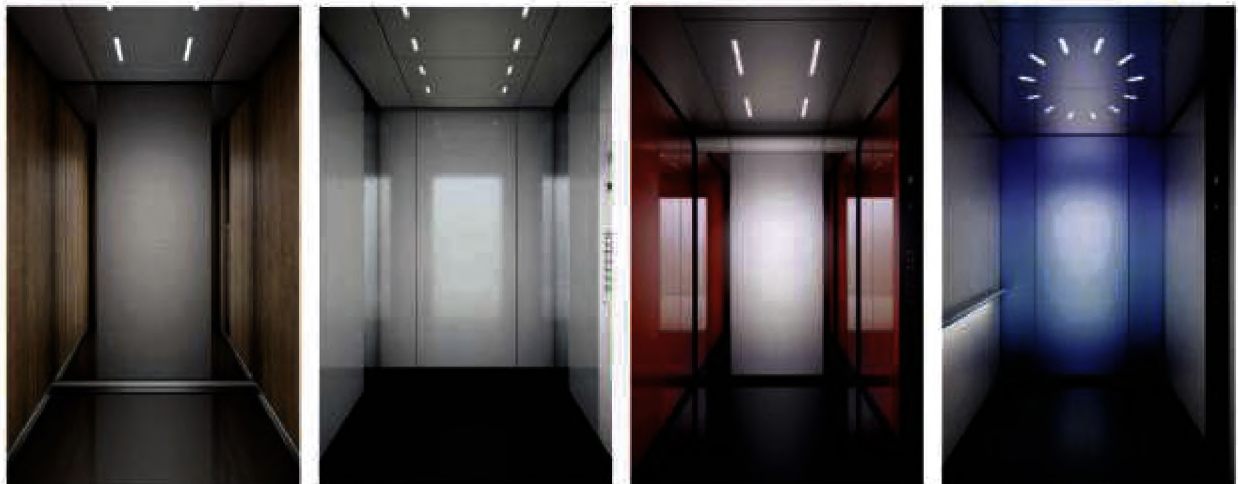


Flexible & customized decoration

Stainless Steel Design Cars



M.S. Powder Coated Cars



Function List

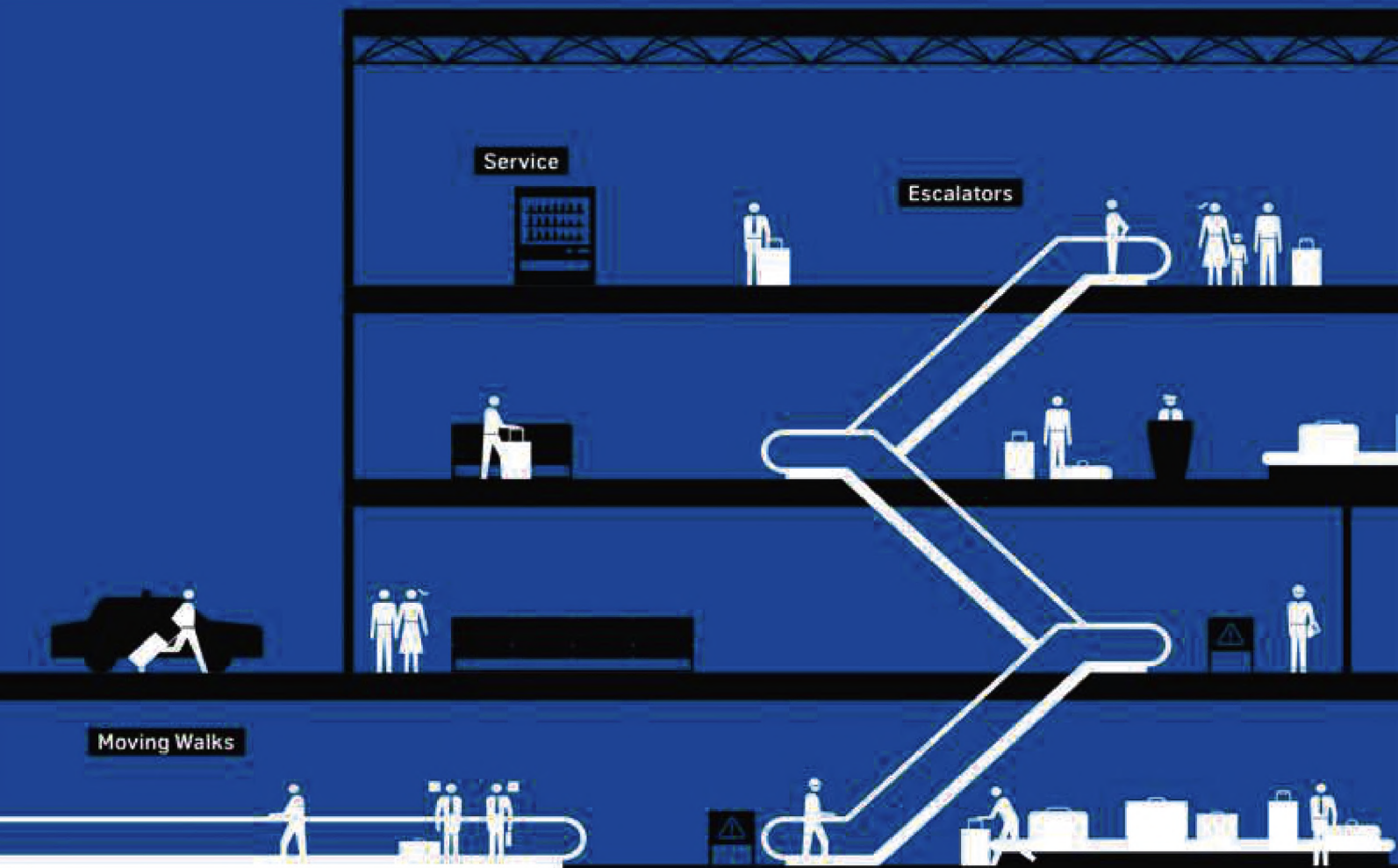
Standard The following functions come as standard with Liiften elevators	Human interface	Security	Passenger comfort	Safety	Energy efficiency	Reliability
ACVVVF closed loop drive						
Alarm button in COP with battery back-up						
Automatic operation for car fan						
Adjustable door open time						
Braille on push buttons						
Dot matrix scrolling display in car and landing operating panel						
Door open/door close buttons in car operating panel						
Door closing retries						
Door nudging						
Emergency light in car						
Home landing						
Infra-red screen for car door						
Inspection operation from controller and car top						
Intercom 2 - way (elevator car and lobby/security)						
Jammed landing operating panel call button by-pass						
Motor overheat protection						
Voice announcement unit						

Standard The following functions come as standard with Liiften elevators	Human interface	Security	Passenger comfort	Safety	Energy efficiency	Reliability
Access control in car operating panel (through card reader)						
Attendant control						
Car arrival chime on car top						
2-8 Car group						
Earthquake function (earthquake sensors by customer)						
Floor blocking (floor out of service)						
Fireman control (not applicable for elevator below 8 pax)						
Hall indicator with scrolling dot matrix display in red or white color (landing operating panel will be w/o display)						
Hall lantern (applicable for duplex only)						
Full load by-pass						
Intercom 3 - way (elevator car, controller and lobby/security)						
Interface to Building Monitoring System (BMS)						
Independent operation (car VIP function)						
LCD in car operating panel (6.5" black and white)						
Parking operation (key switch in landing operating panel)						
Provision for music system wiring (in travelling cable)						
Provision for CCTV camera signals (in travelling cable)						
Re-level to nearest floor at power on						
Auto rescue device in case of power failure						

All product specifications and parameters specified in this brochure are recorded according to the data valid at the time it was printed. Luften Elevator is entitled to, upon its sole discretion, adjust the relevant technical specifications and / or other parameters according to the actual production situation. Kindly contact the local representative when purchasing our products.



ESCALATOR & MOVING WALK



L-Series Escalators

The L-Series Escalator is a conventional system with a single drive station installed at the top of the truss, allowing for a smooth and compact design that maximizes space efficiency. Appropriate for use in hotels, shopping centers, banks, office buildings, etc.

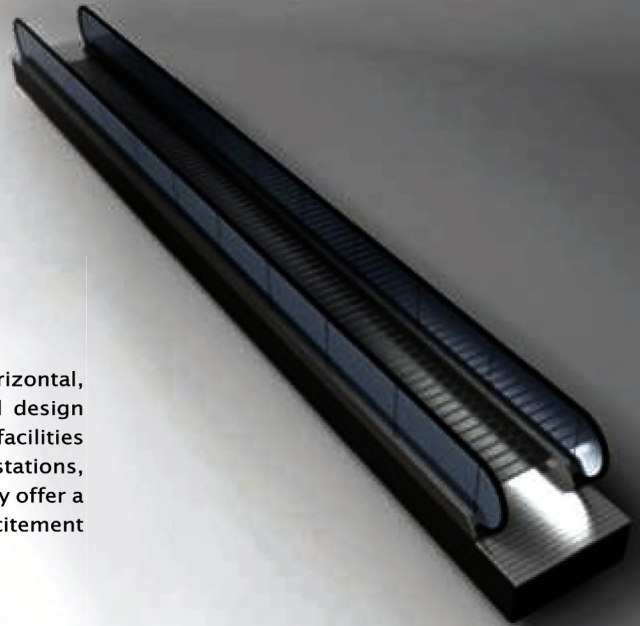
E-Series Escalators

E-Series Escalators are designed for installation in subway stations, multi-sports complexes, and mammoth conference halls or airports. It has also been used to move people outside while protecting them from rain and wind.



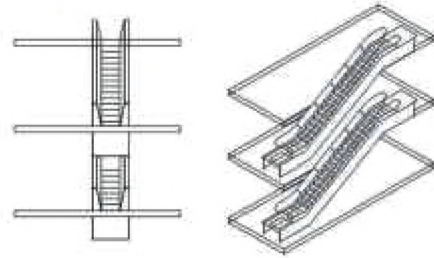
Moving Walks

MARSHALL moving walks are available in horizontal, inclined design within 12 degree or in combined design and are widely applicable to various buildings and facilities such as supermarkets, subways and railroad stations, sports stadiums, department stores, and so on. They offer a new dimension of convenience, satisfaction and excitement for the customers and passengers.

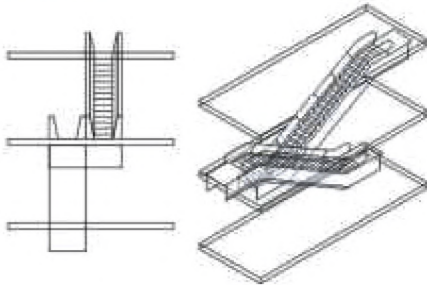


Arrangement Type for Escalators and Moving Walks

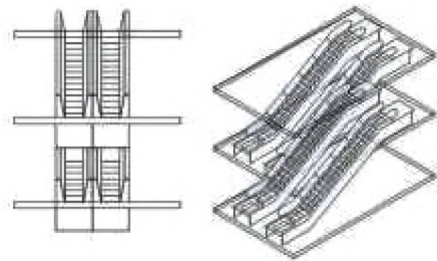
Single



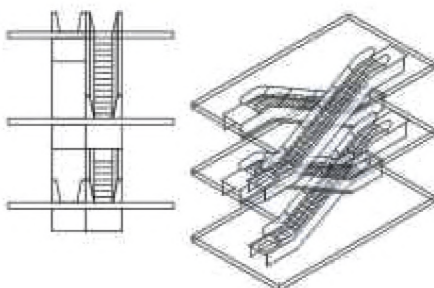
Scissors



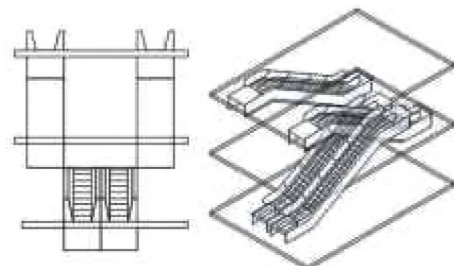
Parallel



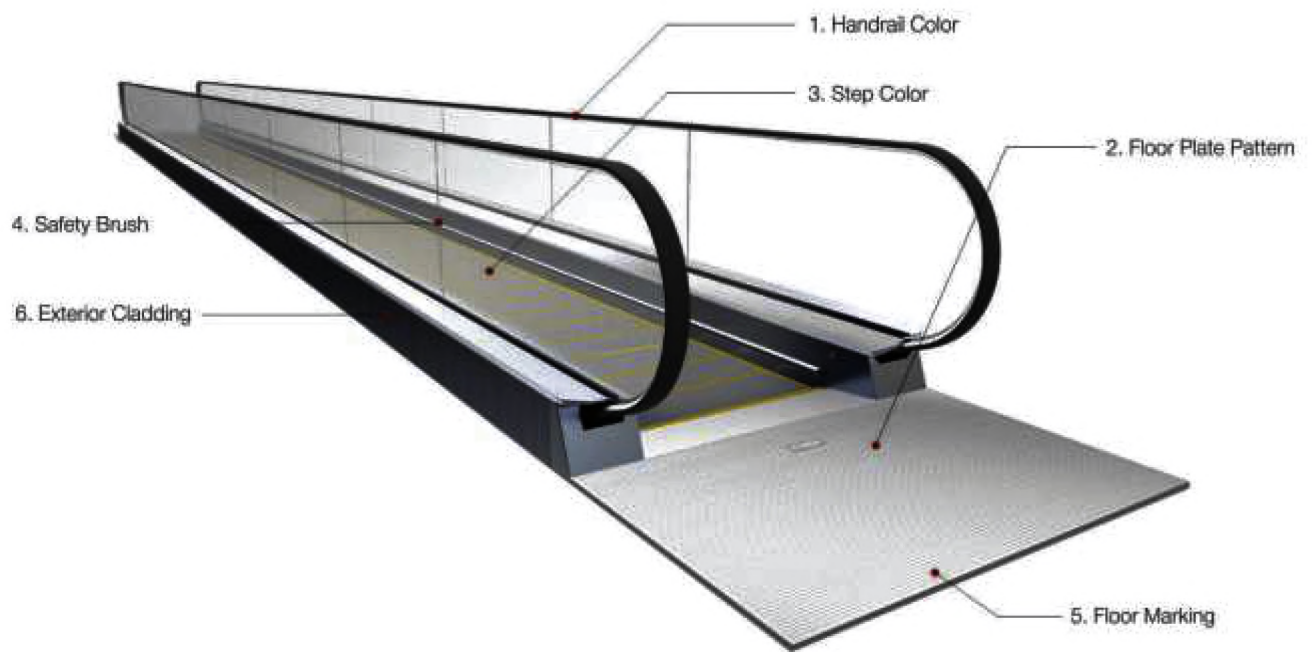
Criss Cross



Double Scissors



Structure (Escalator & Moving Walk)



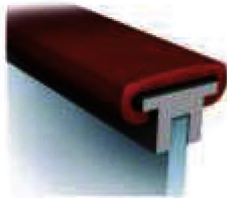
Note : Applicable prices will vary per selected optional features/designs.

Optional Features

Handrail Color



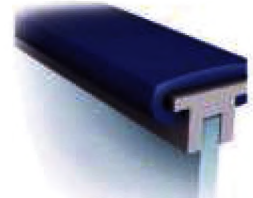
Black
(Standard)



Red

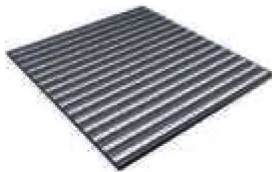


Gray



Blue

Floor Plate Pattern



AL-203 Aluminum(Standard)
ES-203 Stainless steel

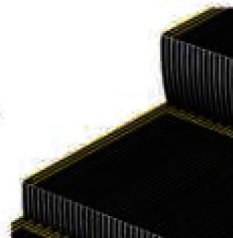


ES-205 Stainless steel

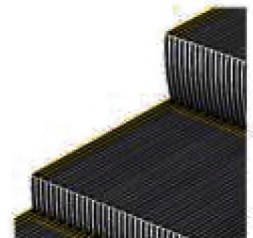


ES-207 Stainless steel

Step Color



Black
(Standard)



Gray

Safety Brush



Promoting passenger safety by gently guiding passengers away from skirt.

Floor Marking



Exterior Cladding (By Others)

- Stainless Steel
- Painted Steel

Auto start-stop function(Radar sensor), Direction indicator



Multi Post



Under Handrail Lighting



Specifications (Escalator & Moving Walk)

Escalator

Model	L-series (L-BT / L-BB)			E-series (ED-BT / ED-BB)	
	800	1000	1200	1000	1200
Type				1000	1200
Vertical Rise H (mm)	30 : 1700 ~ 16000 / 35 : 2000 ~ 6000			16000 ~ 20000	
Inclination	30 / 35			30	
Power Supply	AC 3PH, 440V, 50Hz				
Lighting Power Supply	AC 3PH, 440V, 50Hz				
Rated Speed	0.5m/sec				
Control System	Ac1 (Optional : VVVF Contro)				
Operation System	Key Switch Reversible Operation (Optional : Automatic Operation)				
Transport Capacity	3600	4800	6000	800	6000
(persons/hr)	602	801	1001	808	1008
Step Width (mm)	608	807	1007	814	1014
Skirt Panel Distance (mm)	1150	1350	1550	1500	1700
Escalator Width (mm)					
Handrail Center Distance (mm)	837	1037	1237	1164	1364
Truss Width (mm)	1120	1320	1520	1450	1650

Note :

1. If vertical rise(H) is above 200000mm, Consult ELEVATORHUB
2. In case of L-series, public type shall be applied when E is above 8000mm.


Moving Walk

Model	SM-BT, HM-BB	
Type	1000	1200
Vertical Rise H (mm)	90000(0)/9000(12) ⁰	
Inclination	0/12 ⁰	
Power Supply	AC 3PH, 380V, 50/60Hz	
Lighting Power Supply	AC 1PH, 220V, 50/60Hz	
Rated Speed	0.5m/sec	
Control System	Ac1 (Optional : VVVF Contro)	
Operation System	Key Switch Reversible Operation (Optional : Automatic Operation)	
Transport Capacity	4800	6000
(persons/hr)		
Skirt Panel Distance (mm)	800	1000
Moving Walk Width (mm)	1330	1530
Handrail Center Distance (mm)	1037	1237
Truss Width (mm)	1300	1500

Note :

Please refer to the 'Planning Guide' for standard layout and dimensions of escalators and moving walks





📍 127, Shubh Estate,
Kathwada GIDC
Ahmedabad 382430
Gujarat

☎ 1800 200 3210
+91 93166 66675
+91 98556 24149

✉ info@elevatorhub.in

🌐 www.elevatorhub.in